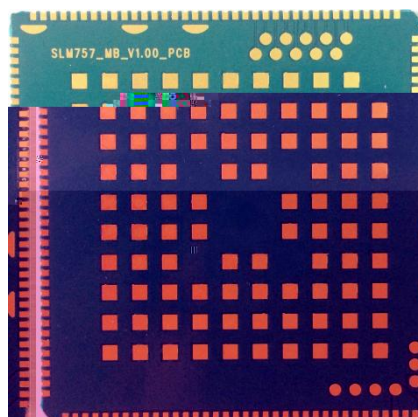


SLM757-Q

_V1.00



| | |
|--|-----------------|
| | SLM757-Q |
| | V1.00 |
| | |
| | 2016 10 |

1.

2.

| | |
|-----------------------|---|
| | |
| | Qualcomm MSM8917 |
| CPU | Quad-core A53 (64bit) 1.4GHz |
| GPU | A308 600MHz |
| | 8GB eMMC + 1GB LPDDR3 16GB+2GB |
| | Android6.0 |
| | 41.0x41.0x3.0mm 146pin+92pin LGA |
| SLM753-MG02 8916-5 | TDD-LTE: B38/39/40/41 FDD-LTE: B1/3 TD-SCDMA: B34/39 WCDMA: B1/B5 EVDO: BC0 CDMA: BC0 GSM: B5/3/8 |
| Wi-Fi | IEEE 802.11b/g/n 2.4G 11ac |
| Bluetooth | BT4.1 |
| FM | Yes |
| GNSS | GPS/Beidou/Glonass/Galileo |

| | | |
|---------|--|--|
| | TD-LTE | Cat4 TD-LTE 117/30Mbps |
| | FDD-LTE | Cat4 FDD-LTE 150/50Mbps |
| | DC-HSPA+ | 42/11.2Mbps |
| | TD-HSPA | 2.8/2.3Mbps |
| | EVDO Rev.A | 3.1/1.8Mbps |
| | EDGE | Class12, 236.8kbps/236.8kbps |
| | GPRS | Class12, 85.6kbps/85.6kbps |
| SIM | DSDA 3.0/1.8V SIM LW/G+G with CSFB to W/G L/TDS/G+G with CSFB to TDS/G L/EVDO/CDMA1x+CDMA1x | |
| Display | Matrix: HD 1280*800 60fps; FULL HD: 1920*1200 45fps | |
| | LCM Size: User defined | |
| | Interface: MIPI DSI 4-lane | |
| | | Interface: main: MIPI CSI 4-lane; front: MIPI CSI 4-lane |

Camera

| | | |
|--|-------|--------------------------------------|
| | PIN | LTE LTE GPS 2.4G WiFi- |
| | Audio | 1 MIC 1 MIC 1 0.8W D 1 1 |

3.

| | |
|-----------|--|
| SLM757-QE | TDD-LTE: B38/40/41 FDD-LTE: B1/3/5/7/8/20 WCDMA: B1/B5/B8 GSM: B5/3/8 |
| SLM757-QA | FDD-LTE B2/4/5/12/13/17 WCDMA B2/4/5/8 |

4.SLM757

SLM757 238pin

| PIN# | SLM757 Pin name | Pad characteristics | Functional description |
|-------------|------------------------|----------------------------|-------------------------------|
| 1 | GND | GND | GND |
| 2 | VBUS | PI,PO | USB Voltage |

| | | | |
|-----|------------------------|-------------|---|
| 66 | MIPI_DSI0_CLK_P | AO | MIPI display serial interface 0 clock+ |
| 67 | MIPI_DSI0_LANE1_N | AO | MIPI display serial interface 0 lane1- |
| 68 | MIPI_DSI0_LANE1_P | AO | MIPI display serial interface 0 lane1+ |
| 69 | MIPI_DSI0_LANE3_N | AO | MIPI display serial interface 0 lane3- |
| 70 | MIPI_DSI0_LANE3_P | AO | MIPI display serial interface 0 lane3+ |
| 71 | MIPI_DSI0_LANE2_N | AO | MIPI display serial interface 0 lane2- |
| 72 | MIPI_DSI0_LANE2_P | AO | MIPI display serial interface 0 lane2+ |
| 73 | GND | GND | GND |
| 74 | RF_WIFI/BT | AI | RF signal for WIFI/BT |
| 75 | GND | GND | GND |
| 76 | GPIO5_UART0_RX | B-PD:nppukp | Configurable I/O,UART0 RX |
| 77 | GPIO4_UART0_TX | B-PD:nppukp | Configurable I/O,UART0 TX |
| 78 | GND | GND | GND |
| 79 | GPIO65_TP_INT_N | B-PD:nppukp | Configurable I/O,TP INT |
| 80 | GPIO64_TP_RST_N | B-PD:nppukp | Configurable I/O,TP RESET |
| 81 | GPIO11_TP_I2C3_SCL | B-PD:nppukp | Configurable I/O,TP I2C SCL |
| 82 | GPIO10_TP_I2C3_SDA | B-PD:nppukp | Configurable I/O,TP I2C SDA |
| 83 | GND | GND | GND |
| 84 | RF_5G | AI | RF signal for WIFI 5G |
| 85 | GND | GND | GND |
| 86 | GPIO61_LCD_ID | B-PD:nppukp | Configurable I/O,primary LCD ID |
| 87 | GPIO60_LCD_RST_N | B-PD:nppukp | Configurable I/O,primary LCD RESET |
| 88 | GPIO24_LCD_TE0 | B-PD:nppukp | Configurable I/O,primary LCD TE |
| 89 | GND | GND | GND |
| 90 | RF_MAIN | AI | RF signal for main ANT |
| 91 | GND | GND | GND |
| 92 | GPIO15_SENSOR_I2C4_SCL | B-PD:nppukp | Configurable I/O,SENSOR I2C SCL |
| 93 | GPIO14_SENSOR_I2C4_SDA | B-PD:nppukp | Configurable I/O,SENSOR I2C SDA |
| 94 | GPIO7_I2C2_SCL | B-PD:nppukp | Configurable I/O,I2C SCL or UART0 RTS |
| 95 | GPIO6_I2C2_SDA | B-PD:nppukp | Configurable I/O,I2C SDA or UART0 CTS |
| 96 | UIM2_DET | B-PD:nppukp | Configurable I/O,UIM2 removal detection |
| 97 | UIM2_RESET | B-PD:nppukp | Configurable I/O,UIM2 reset |
| 98 | UIM2_CLK | B-PD:nppukp | Configurable I/O,UIM2 clock |
| 99 | UIM2_DATA | B-PD:nppukp | Configurable I/O,UIM2 data |
| 100 | VREG_L15_UIM2 | PO | PMIC output for UIM2 |
| 101 | UIM1_DET | B-PD:nppukp | Configurable I/O,UIM1 removal detection |

| | | | |
|-----|---------------|-------------|-----------------------------|
| 102 | UIM1_RESET | B-PD:nppukp | Configurable I/O,UIM1 reset |
| 103 | UIM1_CLK | B-PD:nppukp | Configurable I/O,UIM1 clock |
| 104 | UIM1_DATA | B-PD:nppukp | Configurable I/O,UIM1 data |
| 105 | VREG_L14_UIM1 | PO | PMIC output for UIM1 |

| | | | |
|-----|----------|-------|----------------|
| 138 | USB_ID | AI | USB ID |
| 139 | USB_DM | AI,AO | USB data minus |
| 140 | USB_DP | AI,AO | USB data plus |
| 141 | GND | GND | GND |
| 142 | GND | GND | GND |
| 143 | VBAT | PI,PO | Battery |
| 144 | VBAT | PI,PO | Battery |
| 145 | VBAT | PI,PO | Battery |
| 146 | GND | GND | GND |
| 147 | GND | GND | GND |
| 148 | GND | GND | GND |
| 149 | LCD_CABC | | |

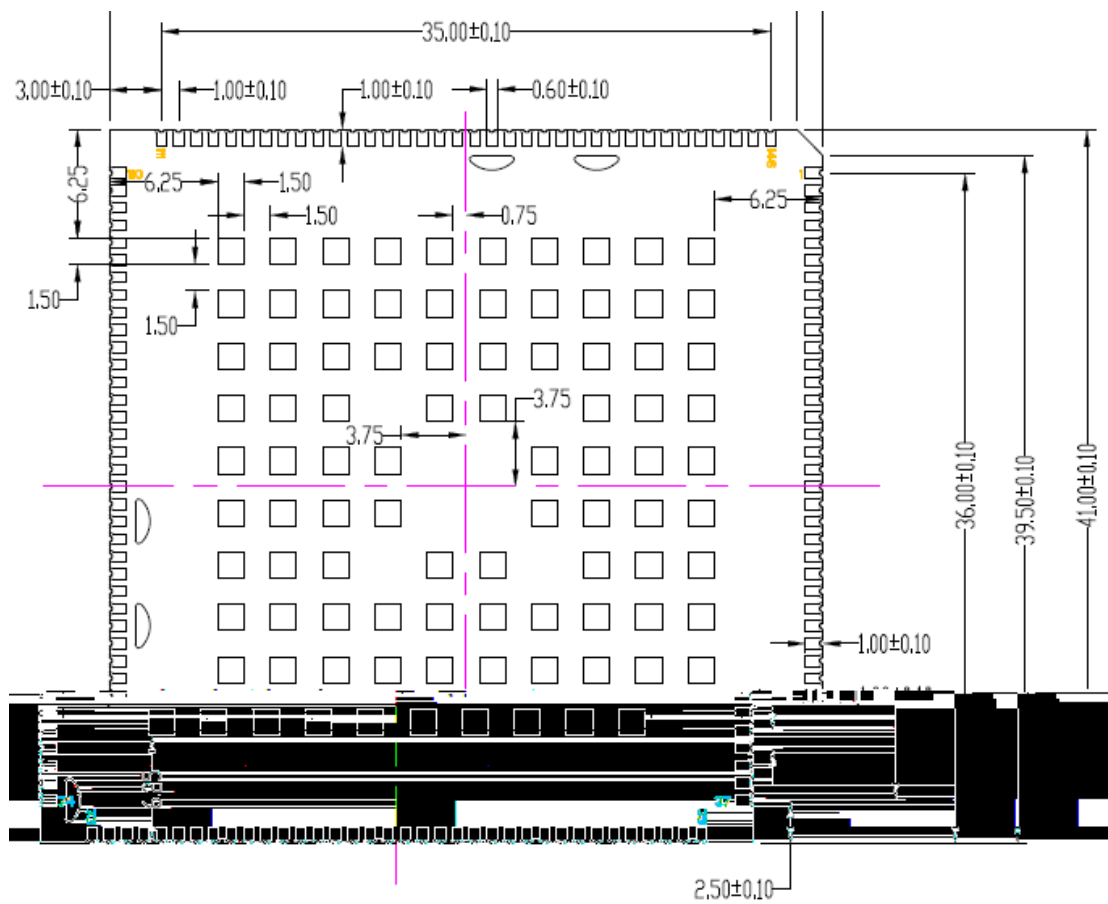
| | | | |
|-----|---------------------|-------------|---|
| 174 | GND | GND | GND |
| 175 | GND | GND | GND |
| 176 | GPIO130 | B-PD:nppukp | Configurable I/O |
| 177 | GND | GND | GND |
| 178 | GND | GND | GND |
| 179 | GPIO44_MAG_RST_N | B-PD:nppukp | Configurable I/O,Magnetometer interrupt |
| 180 | GPIO94 | B-PD:nppukp | Configurable I/O |
| 181 | GPIO95 | B-PD:nppukp | Configurable I/O |
| 182 | GPIO123 | B-PD:nppukp | Configurable I/O |
| 183 | SMB_PARALLEL_CHG_EN | DO | Connect SMB_EN for parallel charging(PMI8952) |
| 184 | GPIO125 | B-PD:nppukp | Configurable I/O |
| 185 | GPIO126 | B-PD:nppukp | Configurable I/O |
| 186 | GPIO129 | B-PD:nppukp | Configurable I/O |
| 187 | GPIO45 | B-PD:nppukp | Configurable I/O |
| 188 | GPIO31_CAM_I2C_SDA1 | B-PD:nppukp | Configurable I/O,Dedicated camera I2C1 SDA |
| 189 | GPIO32_CAM_I2C_SCL1 | B-PD:nppukp | Configurable I/O,Dedicated camera I2C1 SCL |
| 190 | GND | GND | GND |
| 191 | MIPI_CSI1_LANE3_P | AI | MIPI camera serial interface 1 lane3+ |
| 192 | MIPI_CSI1_LANE3_N | AI | MIPI camera serial interface 1 lane3- |
| 193 | GND | GND | GND |
| 194 | GND | GND | GND |
| 195 | GND | GND | GND |
| 196 | GPIO25_LCD_TE1 | B-PD:nppukp | Configurable I/O,secondary LCD TE |
| 197 | MIPI_DSI1_LANE0_N | AO | MIPI display serial interface 1 lane0- |
| 198 | MIPI_DSI1_CLK_P | AO | MIPI display serial interface 1 clock+ |
| 199 | MIPI_DSI1_CLK_N | AO | MIPI display serial interface 1 clock- |
| 200 | GPIO19_NFC_I2C5_SCL | B-PD:nppukp | Configurable I/O,NFC I2C SCL |
| 201 | GPIO18_NFC_I2C5_SDA | B-PD:nppukp | Configurable I/O,NFC I2C SDA |
| 202 | GPIO12 | B-PD:nppukp | Configurable I/O |
| 203 | GPIO90_DMIC0_DATA | B-PD:nppukp | Configurable I/O,Digital MIC0 data |
| 204 | GPIO89_DMIC0_CLK | B-PD:nppukp | Configurable I/O,Digital MIC0 clock |
| 205 | GPIO99 | B-PD:nppukp | Configurable I/O |
| 206 | GPIO98 | B-PD:nppukp | Configurable I/O |
| 207 | GPIO97 | B-PD:nppukp | Configurable I/O |
| 208 | GPIO96 | B-PD:nppukp | Configurable I/O |

| | | | |
|-----|-------------------|-------------|---|
| 209 | GND | GND | GND |
| 210 | GND | GND | GND |
| 211 | GND | GND | GND |
| 212 | GND | GND | GND |
| 213 | GND | GND | GND |
| 214 | GND | GND | GND |
| 215 | GPIO68_DCAM_PWDN | B-PD:nppukp | Configurable I/O |
| 216 | GPIO41 | B-PD:nppukp | Configurable I/O,Accelerometer interrupt2 |
| 217 | GPIO42_G_INT1_N | B-PD:nppukp | Configurable I/O,Accelerometer interrupt1 |
| 218 | GPIO48 | B-PD:nppukp | Configurable I/O |
| 219 | GPIO46 | B-PD:nppukp | Configurable I/O |
| 220 | GPIO124 | B-PD:nppukp | Configurable I/O |
| 221 | MIPI_DSI1_LANE1_P | AO | MIPI display serial interface 1 lane1+ |
| 222 | MIPI_DSI1_LANE1_N | AO | MIPI display serial interface 1 lane1- |
| 223 | GPIO17_UART1_RX | B-PD:nppukp | Configurable I/O,UART1 RX |
| 224 | GPIO16_UART1_TX | B-PD:nppukp | Configurable I/O,UART1 TX |
| 225 | GPIO88_SPI7_CLK | B-PD:nppukp | Configurable I/O,SPI CLK |
| 226 | GPIO87_SPI7_CS_N | B-PD:nppukp | Configurable I/O,SPI CS |
| 227 | GPIO86_SPI7_MISO | B-PD:nppukp | Configurable I/O,SPI MISO |
| 228 | GPIO85_SPI7_MOSI | B-PD:nppukp | Configurable I/O,SPI MOSI |
| 229 | GPIO43_PS_INT_N | B-PD:nppukp | Configurable I/O,ALSP interrupt |

23023

5. 2D

2D



6.PIN MAP

