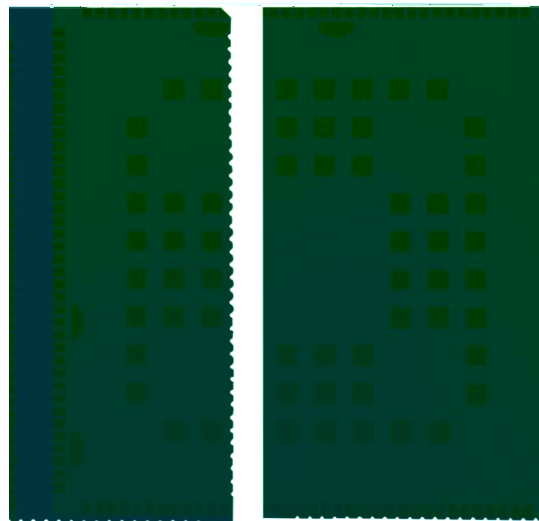


Q ‡?ô IB\$ >



x · & =0	Q ‡?ô IB\$ >
x(x \ ')	
3 j ´	\$! c 25¾ a7- ° _6Ñ - 9L€ œ (
3 O	α 8

x ñ ²F

G A+)) _0!n -‘µ^j , ; 6 -é *; 6 ,~f?JQ H9 ¢7-FJ Q±È” Q± F2
+X³H8 H9 : 88 H9 78A5 9 8C H8 G78A5 78A5 ; GA J/ý5•5 f?,’íV
ª7- 4iFJ Q±Ä G A+)) G÷+XbXfc X) ýœ3+5 È _1,’Ö•FO)·Ö
H88 H9. + AVdg
: 88 H9.) AVdg) AVdg
78A5 Eî 87 GD5 . (AVdg) +*AVdg
9 8C Eî 9 8C F 5. AVdg , AVdg
H8 G78A5 Eî GD5 . (AVdg AVdg
78A5 .) *_Vdg) *_Vdg
; GA Eî 98; 9. * , _Vdg * , _Vdg

G A+)) X EQFO íV ž Ö•, ’ < & È ÈB N# Ä ÄFJAß2o Ä : Ä6H ¼; DG
Ï7- È -# Ä+X ¼?öNÁ- x Ä¹Lb ÄE-E-Aî 7 Äª7- £ {1 4ø1 1y x ñ Ä

(© W G>~

x ñ(©W		ÿF
£		E UWt a a AGA, - *
7DI		E UX Wt f 5) *(Vh ;
; DI		5 *(A
3+5 µ ^		, ; 6 AA7 ; 6 D88F ñ é *; 6 ; 6
ý OE3+5		5bXfc X)
j(() () a a ÈFp~ „1>ð ÅG !:- d b
5•5 NÁ!â G A+)) , - *)		H88 H9. 6 , - ((:88 H9. 6 H8 G78A5. 6 (- 78A5. 6 6) 9 8C. 67 78A5. 67 ; GA. 6) ,
:		999, V b (;
6 hcch		6H(
: A		_1
; BGG		; DG 6 Xc ; cbUgg
ž Ö•	H88 H9	7U(H88 H9 + AVdg
	:88 H9	7U(:88 H9)) AVdg
	87 GD5	(AVdg
	H8 GD5	, AVdg
	9 8C F 5	, AVdg
	98; 9	7 Ugg * , _Vdg * , _Vdg
	; DFG	7 Ugg ,) *_Vdg ,) *_Vdg
G A		8G85 ü ' ü µ , _1 G A " ; ; h 7G: 6 hc ; H8G; ; h 7G: 6 hc H8G; 9 8C 78A5 78A5
8 gd U		AUhf . 8 Ö ;
		7A G .I g f X b X
		bh f UW. A D 8G (Ub

7Ua fU Ä}¼ > ütÿdÄ	bh f UW. a Ub. A D 7G (Ub g/ fcbh. A D 7G Ub g	
	tÿd D . AU . }5ž)A >5ž A	
	X c X WcX	, d dg. *(AD(A - 7 8 L D, 9 7 *) + d dg b G
X c bWcX	, d dg. *(* AD(D,	
EÄ •Ai 7	9K^ Ä 0 £ jK^ ÄN#Gÿ ÄN#Gÿ Ä	
	+e é ? HD	
F g h	_ 1.œ = }	
Ä+X Ö	Ö =0	k?± İ7- ÿF
	65H	Q ‡+e\$ÄEÄ • È (È 70 l ,
	G8 C	H: 7UfX È 0 W _ 1 ; 6
	I G6	_ 1 CH; : CF79SI G6S6CCHÄ : ù jf I G6 E , È+X ¾3W U ;E- Ä
	I 5FH	04ô (4i UfhÈ 04ô 4i Ufh
	7 (: cf g bgcfg HD ch fg
	GD	AUgh f cb
	5 8 7	_ 1
	u+e İ7-	_ 1 FG u+e8ß(w
	PœEi	_ 1
	; D C	(
	7 C B	Î & Jİ > 7+e"•
	4NÄ Ö	Fp/ „
5 X c	D ...1 A 7 MŽ.uA 7 D 6c j A 7 D } · Ä V İ n Ä D \1, D 0û f 6c j	

Ö

pin#	pin name	Pad characteristics	Functional description
1	VBAT	PI,PO	Battery
2	VBAT	PI,PO	Battery
3	GND	GND	GND
4	MIC_IN1_P	AI	Microphone 1 input, single-ended
5	GND_MIC	GND	MIC GND
6	MIC_IN2_P	AI	Earphone Microphone input, single-ended
7	GND	GND	GND
8	CDC_EAR_P	AO	Earpiece amplifier output, differential plus
9	CDC_EAR_M	AO	Earpiece amplifier output, differential minus

36	UART_CTS	B-PD:nppukp	Configurable I/O UARTor I2C SDA
37	UART_RTS	B;B-PD:nppukp	Configurable I/O UARTor I2C SCL
38	VREG_L11_SDC	PO	PMIC output 2.95V
39	SDC2_SDCARD_CLK	BH-NP:pdpukp	Secure digital controller 2 clock
40	SDC2_SDCARD_CMD	BH-PD:nppukp	Secure digital controller 2 command
41	SDC2_SDCARD_D0	BH-PD:nppukp	Secure digital controller 2 data bit 0
42	SDC2_SDCARD_D1	BH-PD:nppukp	Secure digital controller 2 data bit 1
43	SDC2_SDCARD_D2	BH-PD:nppukp	Secure digital controller 2 data bit 2
44	SDC2_SDCARD_D3	BH-PD:nppukp	Secure digital controller 2 data bit 3
45	SDC2_SDCARD_DET	B-PD:nppukp	

117	GPIO10_SPI_CS	B-PD:nppukp	Configurable I/O SPI or I2C
118	GPIO9_SPI_MISO	B-PD:nppukp	Configurable I/O SPI
119	GPIO8_SPI_MOSI	B-PD:nppukp	Configurable I/O SPI
120	GND	GND	GND
121	RF_GPS	AI	RF signal-GPS ANT
122	GND	GND	GND
123	GPIO31	B-PD:nppukp	Configurable I/O,
124	GPIO69	B-PD:nppukp	Configurable I/O,
125	VREG_L6_1P8	OUPUT	PMU Supply 1.8V
126	VCOIN	PI	VCOIN
127	CHARGE_SEL	DI	SMB CHAGER SEL
128	PM8916_MPP2	AO-Z;DI, DO	Configurable MPP; used for PWM or ADC
129	VREG_L17_2P85	OUPUT	PMU Supply 2.85V
130	GND	GND	GND
131	RF_DIV	AI	RF signal-DIV ANT
132	GND	GND	GND
133	VBATT_SNS	PI	Battery voltage sense point
134	BAT_THERM	DI	Battery therm monitor
135	GND	GND	GND
136	CDC_HPH_R	AO	Earphone right output
137	CDC_HPH_REF	AI	Earphone driver amplifier ground reference
138	CDC_HPH_L	AO	Earphone left output
139	CDC_HS_DET	DI	Headset detection
140	GND	GND	GND
141	VBUS	PI	USB VBUS Voltage
142	VBUS	PI	USB VBUS Voltage
143	GND	GND	GND
144	GND	GND	GND
145	VBAT	PI,PO	Battery
146	VBAT	PI,PO	Battery
147	GND	GND	GND
148	GND	GND	GND
149	GND	GND	GND
150	GND	GND	GND
151	RESERVED		RESERVED
152	RESERVED		RESERVED
153	RESERVED		RESERVED
154	RESERVED		RESERVED
155	RESERVED		RESERVED
156	RESERVED		RESERVED
157	RESERVED		RESERVED

158	MIPI_CSI1_LANE1_N	AI, AO	MIPI camera serial interface 1lane 1 ±negative
159	MIPI_CSI1_LANE1_P	AI, AO	MIPI camera serial interface 1lane 1 ±positive
160	GND	GND	GND
161	GND	GND	GND
162	GND	GND	GND
163	GND	GND	GND
164	GND	GND	GND
165	GND	GND	GND
166	GND	GND	GND
167	GND	GND	GND
168	GND	GND	GND
169	GND	GND	GND
170	GND	GND	GND
171	GND	GND	GND
172	GND	GND	GND
173	GND	GND	GND
174	GND	GND	GND
175	GND	GND	GND
176	GND	GND	GND
177	GND	GND	GND
178	GND	GND	GND
179	PM_RESIN_N	DI	PMIC reset
180	GND	GND	GND
181	GND	GND	GND
182	GND	GND	GND
183	VREG_L12_SDC	PO	PMU supply 2.95V
184	GND	GND	GND
185	GND	GND	GND
186	GND	GND	GND
187	MIPI_CSI0_LANE3_P	AI, AO	MIPI camera serial interface 0 lane 3 ±positive
188	GND	GND	GND
189	GND	GND	GND
190	RF_FM	AO	RF signal-FM ANT
191	RESERVED		RESERVED
192	GND	GND	GND
193	GND	GND	GND
194	RESERVED		RESERVED
195	RESERVED		RESERVED
196	RESERVED		RESERVED
197	RESERVED		RESERVED
198	GND	GND	GND

199	RESERVED		RESERVED
200	GND	GND	GND
201	GND	GND	GND
202	RESERVED		RESERVED
203	MIPI_CSI0_LANE3_N	AI, AO	MIPI camera serial interface 0 lane 3 -negative
204	MIPI_CSI0_LANE2_P	AI, AO	MIPI camera serial interface 1 lane 1 +positive
205	MIPI_CSI0_LANE2_N	AI, AO	MIPI camera serial interface 1 lane 1 -negative
206	RESERVED		RESERVED
207	RESERVED		RESERVED
208	GND	GND	GND
209	GND	GND	GND
210	CBL_PWR_N	DI	Cable poweron detect input

Q ‡ 5 ´ .

